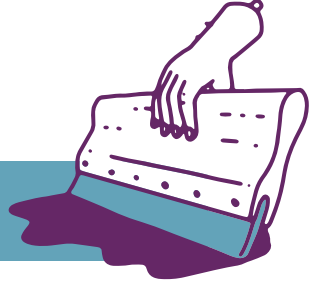


Before you send us your design, please read the guidelines below.

If you have any more questions, send us a friendly email at info@fabric.gent.



SCREENPRINTING

- **Colors:** If your design requires predefined colors, please use the Pantone Solid Coated range.
- **Files for print:**
 - We prefer a vector file (.ai/.eps/.svg) with text in outlines (or include the used fonts)
 - Image file (.psd/.jpg/.tiff/.png) in true print size and high resolution (300dpi)
 - **NEVER** use images from the internet in screenresolution (72dpi) and change them to print resolution (300dpi). You're only making things worse and getting us frustrated. Trust us, you don't want that.
 - **NEVER** use the font Comic Sans. Never. Unless you're making a coloring book for kids.
- **Max. print sizes:**
 - T-shirts (fits on a Small unisex shirt) : 38 x 50cm
 - Front hoodie (with front pocket): 35 x 26 cm
 - Sleeves : 11 x 45 cm
 - We don't do all-over prints. Keep an edge of min. 2cm between the print and the seam.
- **Mockups:** Please download the blank packshots from the Stanley/Stella website here:
<https://apps.stanleystella.com/cloudinary/cloudinary/>



EMBROIDERY

- **Colors:** You can convert your pantone colors to embroidery thread here:
<https://shop.madeira.co.uk/?page=colorsearch> (Use the Polyneon 40 range !)
- **Files for embroidery:**
 - We prefer a vector file (.ai/.eps/.svg) with text in outlines (or include the used fonts)
 - Image file (.psd/.jpg/.tiff/.png) in true size and high resolution (300dpi).
- **Max. embroidery sizes:**
 - Small embroidery : 12 x 12 cm
 - Big embroidery: 28 x 30 cm
 - Caps front : 13 x 6 cm
 - Caps back (arch) : 9 cm width
 - Small sleeve embroidery : 6 cm width

